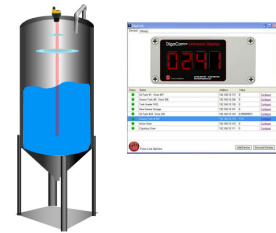




Flow Line Options

# Quick Start Guide

AccuTank™ Tank Level Monitoring System



## Safety Precautions

If you are unsure of the suitability of a DigaCom 2000 display for your installation, please consult your FLO-Corp representative for further information.

### Electrical Shock Hazard

With the lid of the DigaCom 2000 removed, it is possible to contact components that carry high voltage, causing serious injury or death. All power to the DigaCom 2000 and the relay circuit it controls should be turned OFF prior to working on the DigaCom 2000. If it is necessary to make adjustments during powered operation, use extreme caution and use only insulated tools. Making adjustments to a powered DigaCom 2000 is not recommended.

### Flammable or Explosive Applications

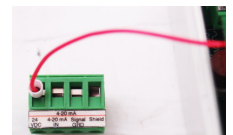
Flow Line Options Corporation manufactures several different display models with different mounting and internal configurations. It is the user's responsibility to select a controller model that is appropriate for the application, install it properly, perform tests on the installed system, and maintain all components.

1. To begin, remove the lid of the DigaCom 2000 by unfastening the 4 screws at each corner. Remove the supply power terminal block located in the upper right hand corner by unplugging and set aside.
2. To connect the EchoPod Level Transmitter, locate and separate both the **Red** and **Black** wires from the EchoPod Level Transmitter



3. Remove the transmitter terminal block, located on the bottom right hand side, from the DigaCom 2000 Universal Process Display

4. Connect the **Red** wire from the EchoPod to 24 VDC OUT Position on the terminal block (top position)



5. Connect the **Black** wire from the EchoPod to the 4-20mA in Position on the terminal block (the fourth position down).

6. With both the **Red** and **Black** wires firmly attached to the terminal block, reconnect the terminal block back into the bottom right terminal block position on the DigaCom 2000 Universal Process Display.



7. To finish, connect the supply power with appropriate reference to AC or DC voltage (please refer to the owners manual for AC/DC supply power wiring diagram) and reconnect the terminal block back into the top terminal position on the DigaCom 2000 Universal Process Display.

If further installation instructions are needed or if you are having technical difficulties, please visit [www.flowlineoptions.com](http://www.flowlineoptions.com) or call 1.877.FLO.LINE (356.5463)